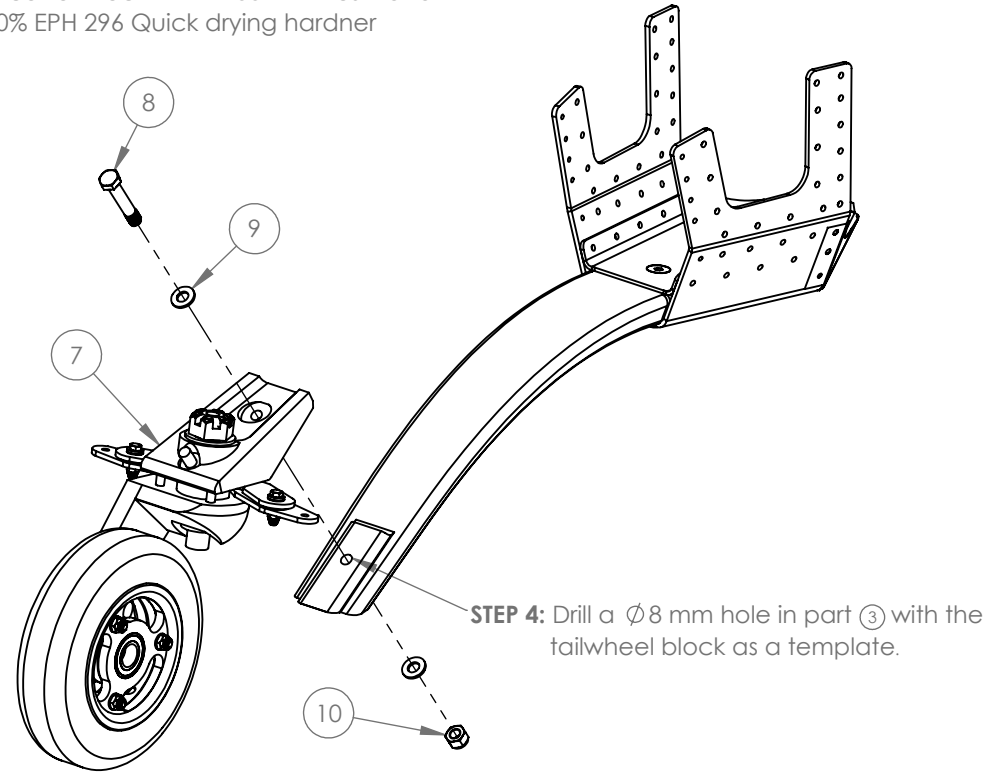
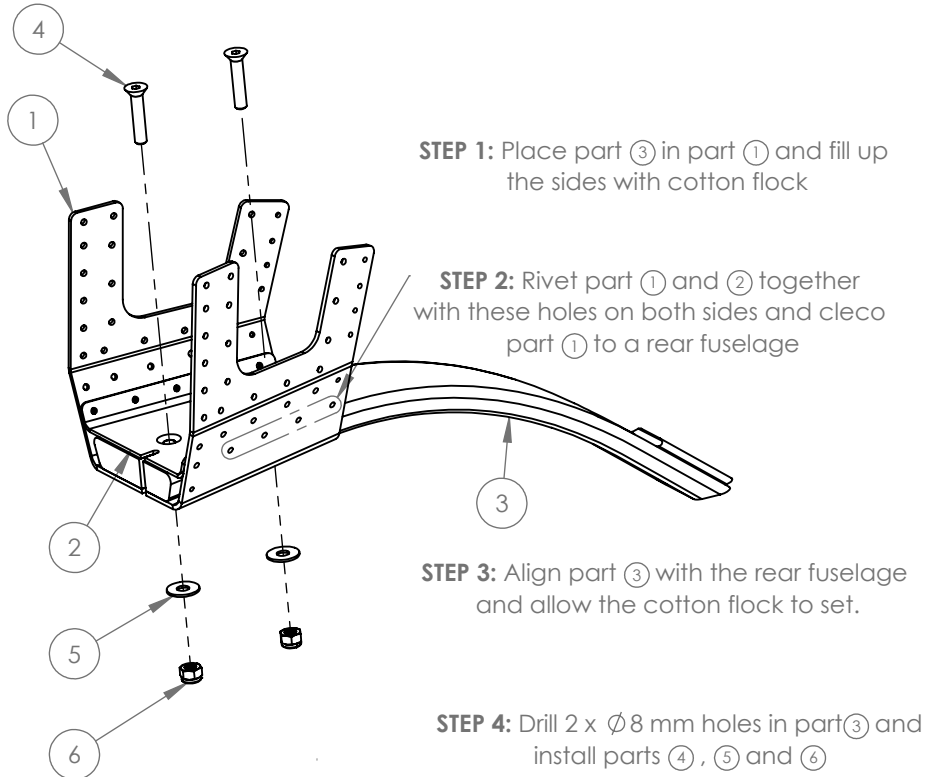


ITEM NO.	PART NUMBER	DESCRIPTION	QTY.
1	UN-BKT-007-C-D-1	Tailwheel Mount Bracket	1
2	UN-PLT-007-C-D-1	Tailwheel Mount Plate	1
3	UN-CMP-007-C-D-0	Tailwheel Composite Arm	1
4	HW-MTB-841-X-X-0	M8 x 41mm Countersunk Bolt	2
5	HW-MTW-086-X-X-0	M8 Penny Washer	2
6	HW-MTL-080-R-X-0	M8 Nyloc Locknut	2
7	WHLT - 08	MATCO Tailwheel Assembly	1
8	HW-ANB-516-X-X-0	AN5 x 45mm Hex Bolt	1
9	HW-ANW-050-X-X-0	AN5 Thick Washer	2
10	HW-ANL-500-X-X-0	AN5 Locknut	1

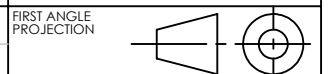
Mix the cotton flock with 1100 ERPL resin and 30% EPH 296 Quick drying hardner



**STEP 5:** Apply releasing agent to the tailwheel block. Fill the cavity of the tailwheel block with cotton flock and bolt the tailwheel assembly on part ③.

**STEP 6:** Align the tailwheel assembly with part ③ and the rear fuselage. Allow the cotton flock to set and then remove the tailwheel assembly ⑦.

**TOLERANCES**  
UNLESS OTHERWISE SPECIFIED:  
1. HOLE DIMENSIONS: ±0.1mm  
2. FLAT PATTERN EDGES ±0.4mm  
3. BENT PARTS: ±0.5mm  
4. BENDING ANGLES: ±1°  
5. PIPE LENGTHS: ±0.5mm



DISTRIBUTION LIST	COMPOSITES		DRAWING CHANGE	ISSUE	DATE	DESCRIPTION OF CHANGE
		X				
	MACHINING					
	WELDING					
	SHEETMETAL		0	2016/01/11	Initial Issue	
	INSPECTION	X				

DRAWN: <b>ARMIN</b>	PART NUMBER: <b>UN-ATW-001-C-D-0</b>	Rev: <b>0</b>
DATE: <b>2016/01/11</b>	DESCRIPTION: <b>Composite Tailwheel Arm With Bracket</b>	
CHECKED:	DRAWING No: <b>UN-ATW-001-C-D-0-C-0</b>	RFC No: <b>912</b>
	MATERIAL & THICKNESS (mm): <b>N/A</b> <b>N/A</b>	Weight [g]: <b>1994.66</b>
	SCALE: <b>1:5</b>	SHEET: <b>1 OF 1</b> A4